

# GCSE Geography



## Practice Exam Questions



Paper 1: Section A:  
The Challenge of Natural Hazards



4 mark questions

*Explain how volcanic activity and orbital changes can cause climate change. (4 marks)*

*Explain how planting trees and using renewable energy can mitigate climate change. (4 marks)*

*Explain the formation of a tropical storm. (4 marks)*

*Explain how human activity can lead to an increase in climate change. (4 marks)*

6 mark questions

*Explain how the effects of tectonic hazards vary between areas of contrasting wealth. (6 marks)*

*Explain how plate boundaries can cause tectonic hazards. (6 marks)*

*Explain how we can mitigate and adapt to climate change. (6 marks)*

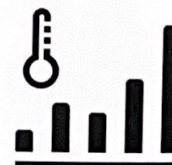
9 mark questions

*Choose either an earthquake or a volcanic eruption. Assess the extent to which primary effects are more significant than secondary effects. Use an example that you have studied. (9 marks)*

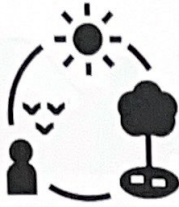
*Assess the extent that prediction is the most important factor in reducing the effects of tropical storms. (9 marks)*

*To what extent are immediate responses more important than long term responses when dealing with tectonic hazards? (9 marks)*

*Evaluate mitigation and adaption strategies in relation to climate change. (9 marks)*







## Paper 1: Section B: The Living World



### 4 mark questions

Explain how eco-tourism helps manage the rainforest sustainably. (4 marks)

Explain the role of producers in an ecosystem. (4 marks)

Explain how a small scale ecosystem you have studied can be affected by local change. (4 marks)

Explain how energy gets into and moves around an ecosystem. (4 marks)

### 6 mark questions

Explain how animals and vegetation adapt to a hot environment. (6 marks)

Explain how deforestation can have social and economic impacts. (6 marks)

Evaluate the impacts of rainforest deforestation. (6 marks)

Explain how animals and vegetation adapt to the rainforest. (6 marks)

Explain how the rainforest can be sustainably managed. (6 marks)

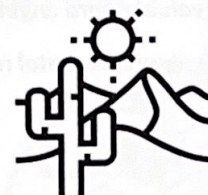
### 9 mark questions

To what extent do hot environments provide opportunities for economic development? (9 marks)

For a hot desert environment or a cold environment you have studied, assess the importance of management strategies used to reduce the risk of environmental damage. (9 marks)

To what extent are hot environments at risk from human activity? (9 marks)

To what extent can hot environments be successfully managed? (9 marks)





## Paper 1: Section C:

### Physical UK Landscapes (Rivers and Coasts)



#### 4 mark questions

##### RIVERS

*Explain a floodplain forms. (4 marks)*

*Explain how soft engineering (or hard engineering) can prevent flooding. (4 marks)*

*Explain how a meander changes over time. (4 marks)*

*Explain the formation of a mudflat / saltmarsh. (4 marks)*

##### COASTS

*Explain how headlands and bays change over time. (4 marks)*

*Explain how transportation occurs along the coastline. (4 marks)*

*Explain the formation of a beach. (4 marks)*

*Explain how soft engineering (or hard engineering) can prevent erosion. (4 marks)*

#### 6 mark questions

##### RIVERS

*Explain how a landform is created by erosion. (6 marks) (Waterfalls / Oxbow Lakes)*

*Evaluate hard engineering (or soft) strategies in preventing flooding. (6 marks)*

*Assess the physical and human causes of flooding. (6 marks)*

*Evaluate a river management scheme you have studied. (6 marks)*

*Assess how rivers' hydrographs can look different after the same amount of rainfall. (6 marks)*

##### COASTS

*Explain how landforms are created by erosion (or deposition). (6 marks)*

*Evaluate hard engineering (or soft) strategies in preventing erosion. (6 marks)*

*Evaluate a coastal management scheme you have studied. (6 marks)*







## Paper 2: Section A: Urban Issues and Challenges



### 4 mark questions

Explain why there are more megacities in LICs/NEEs. (4 marks)

Explain how regeneration can reduce urban deprivation. (4 marks)

Explain why there is economic inequality in urban areas. (4 marks)

Explain why an urban area in a HIC or LIC is nationally and internationally important. (4 marks)

### 6 mark questions

Assess how an urban area can be sustainable. (6 marks)

Explain how congestion is managed in urban areas in HICs. (6 marks)

Explain how industrialisation can lead to development. (6 marks)

Assess how urbanisation can lead to economic inequality. (6 marks)

Explain why environmental problems aren't managed in urban areas in LICs/NEEs. (6 marks)

### 9 mark questions

To what extent has urban change created environmental challenges in a HIC that you have studied? (9 marks)

Evaluate the effectiveness of an urban planning strategy in improving the life of the urban poor in a LIC / NEE you have studied. (9 marks)

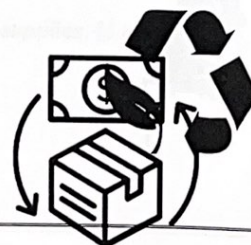
To what extent does an urban area in a HIC (or LIC/ NEE) that you have studied provide opportunities? (9 marks)

Evaluate the impacts of a regeneration scheme you have studied in a HIC? (9 marks)

Evaluate how congestion is managed in a urban area in a HIC that you have studied. (9 marks)



## Paper 2: Section B:



## The Changing Economic World

### 4 mark questions

*Explain how fair trade can help close the development gap. (4 marks)*

*Explain socio-economic causes of the development gap. (4 marks)*

*Explain how a country's population pyramid changes as it moved through the DTM. (4 marks)*

*Explain how wealth and health differs in countries with contrasting development. (4 marks)*

### 6 mark questions

*Assess how tourism can help close the development gap. (6 marks)*

*Evaluate the impact of TNCs in the LIC/NEE you have studied. (6 marks)*

*Explain how business and science parks help economic development. (6 marks)*

*Assess the causes of the development gap. (6 marks)*

*Evaluate how aid can help close the development gap in a LIC /NEE that you have studied. (6 marks)*

### 9 mark questions

*To what extent has quality of life improved in a LIC/NEE that you have studied? (9 marks)*

*Assess the importance of transport improvements to the UK economy. (9 marks)*

*Discuss how one or more strategies might reduce regional differences in the UK? (9 marks)*  
*(North south divide)*

*Assess how industry in the UK is becoming more sustainable? (9 marks)*

*TNCs bring advantages to both the host and origin country. To what extent do you agree?. (9 marks)*







Paper 2: Section C:  
Resource Management (Overview and Water)



4 mark questions

Overview

Explain how the changing demand for food has created opportunities. (4 marks)

Explain why there is an increased demand for British food. (4 marks)

Explain why the UK energy mix has begun to change. (4 marks)

Explain why we are still heavily dependent on non-renewable resources. (4 marks)

WATER

Explain how water stress can be dealt with in the UK (4 marks)

Explain the difference between physical water scarcity and economic water scarcity. (4 marks)

Explain how water can be managed sustainably. (4 marks)

Explain how water can be transferred in the UK. (4 marks)

6 mark questions

Overview

Discuss the issues arising from the UK's changing energy mix. (6 marks)

Discuss the advantages from the UK's changing demand for food. (6 marks)

Discuss the challenges of managing water quality in the UK. (6 marks)

Discuss the environmental impacts of importing food. (6 marks)

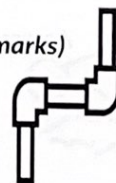
WATER

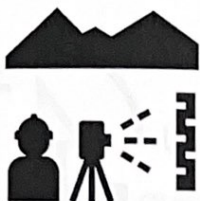
Evaluate the impacts of a water transfer scheme that you have studied. (6 marks)

Explain the social and economic impacts of water insecurity. (6 marks)

Assess how water can be managed sustainably. (6 marks)

Evaluate the success of a local scheme for increasing sustainable water supplies. (6 marks)





## Paper 3: Section B: Fieldwork



### 4 mark questions

*Justify one method of data collection in your physical / human fieldwork. (4 marks)*

*Justify the location of your physical / human fieldwork. (4 marks)*

*Justify one method of data presentation in your physical / human fieldwork. (4 marks)*

*Justify your sampling strategy in your physical / human fieldwork. (4 marks)*

### 6 mark questions

*Evaluate your data presentation methods in your physical / human fieldwork. (6 marks)*

*Evaluate your data collection methods in your physical / human fieldwork. (6 marks)*

*Evaluate your sampling strategy for your physical / human fieldwork. (6 marks)*

*Evaluate your location for your physical / human fieldwork. (6 marks)*

*Evaluate how your investigation could be improved for your physical / human fieldwork (6 marks)*

### 9 mark questions

*To what extent were your conclusions accurate and reliable? (9 marks)*

*Assess how improvements could lead to more accurate and reliable conclusions. (9 marks)*

*To what extent did the results of your enquiry meet the original aims? (9 marks)*

*To what extent were the results of this enquiry helpful in reaching reliable conclusions? (9 marks)*

*With reference to your data collection methods and results, assess the reliability and accuracy of your conclusions. (9 marks)*

*With reference to your data collection methods and results, assess how your enquiry could be improved. (9 marks)*



*Assess how your data collection methods led to reliable conclusions. (9 marks)*

